

At Day's End

SARAH J. MAXWELL



Dusk Settles Quilt designed by: **Sarah J. Maxwell**
Quilt Size: **85" x 85"** • Skill Level: **Advanced Beginner**

Dusk Settles

Introducing Andover Fabrics new collection: **At Day's End**
by Sarah J. Maxwell. Quilt designed by Sarah J. Maxwell

Quilt finishes 85" x 85"
25 Blocks finish 12" x 12"

An appealing mix of elegant paisley, floral, and geometric prints make up the stars that are arranged in a medallion setting. The darker central blocks are surrounded by lighter blocks for this eye-catching design. Some piecing experience will be useful.

Cutting Directions

Note: Read assembly directions before cutting patches. All measurements are cut sizes and include ¼" seam allowances. A fat ⅛ is a 9" x 20"-22" cut of fabric. A fat ¼ is an 18" x 22" cut. WOF designates the width of fabric from selvedge (approximately 42" wide).

Note: Yardage for the fat ¼ and ½ yard prints is generous to allow for switching fabrics if you desire to do so.

Cutting for ONE BLOCK:

Fabric B or Y:

Cut (2) squares 4¼", cut in half diagonally twice to make 8 quarter-square triangles

Cut (4) corner squares 3½"

Center patch:

Cut (1) square 4¾"

Center triangles:

Cut (2) squares 3⅞", cut in half diagonally to make 4 half-square triangles

Side squares on point

Cut (4) squares 2⅝"

Star Points

Cut (2) squares 4¼", cut in half diagonally twice to make 8 quarter-square triangles

8 Triangles

Cut (2) squares 4¼", cut in half diagonally twice to make 8 quarter-square triangles

Fabric A

Cut (12) squares 4¾" for block centers

Fabric B

Cut (32) squares 4¼", cut in half diagonally twice to make 128 quarter-square triangles

Cut (64) squares 3½"

Fabric C

Cut (8) squares 4¾" for block centers

Fabric D

Cut (8) squares 4¾" for block centers

Fabric Requirements

	Yardage	Fabric
Fabric A	blocks	fat ¼
Fabric B	blocks	1¼ yards
Fabric C	blocks	fat ¼
Fabric D	blocks	fat ¼
Fabric E	blocks	½ yard
Fabric F	blocks	½ yard
Fabric G	blocks	fat ¼
Fabric H	blocks	½ yard
Fabric J	blocks	fat ¼
Fabric M	blocks	½ yard
Fabric O	set	1½ yards
Fabric P	blocks	fat ¼
Fabric S	blocks	fat ¼
Fabric T	blocks	fat ¼
Fabric U	blocks	fat ¼
Fabric V	blocks	½ yard
Fabric X	blocks	fat ¼
Fabric Y	blocks	2 yards
Fabric Z	blocks	fat ¼
Fabric AA	blocks	¾ yard
2 Orchid	blocks	½ yard each
	Fabrics I, W	
6 Fat ¼	blocks	fat ¼ each
	Fabrics K, L, N, Q, R, BB	
Binding		¾ yard
Backing		8 yards

Fabric E

Cut (16) squares 3⅞", cut in half diagonally to make 32 half-square triangles

Cut (48) squares 2⅝"

Fabric F

Cut (10) squares 3⅞", cut in half diagonally to make 20 half-square triangles

Cut (32) squares 2⅝"

Fabric G

Cut (16) squares 3⅞", cut in half diagonally to make 32 half-square triangles

Fabric H

Cut (24) squares 4¼", cut in half diagonally twice to make 96 quarter-square triangles

Fabric J

Cut (32) squares 2⅝"

Fabric M

Cut (24) squares 3⅞", cut in half diagonally to make 48 half-square triangles

Dusk Settles Quilt

Fabric O

Cut (4) squares 19", cut in half diagonally twice to make 16 quarter-square triangles
Cut (2) squares 10", cut in half diagonally to make 4 half-square triangles

Fabric P

Cut (16) squares 2⁵/₈"

Fabric S

Cut (4) squares 4³/₄" for block centers

Fabric T

Cut (5) squares 4³/₄" for block centers

Fabric U

Cut (4) squares 4³/₄" for block centers

Fabric V

Cut (16) squares 4¹/₄", cut in half diagonally twice to make 64 quarter-square triangles
Cut (16) squares 2⁵/₈"

Fabric X

Cut (16) squares 2⁵/₈"

Fabric Y

Cut (50) squares 4¹/₄", cut in half diagonally twice to make 200 quarter-square triangles
Cut (100) squares 3¹/₂"

Fabric Z

Cut (16) squares 3⁷/₈", cut in half diagonally to make 32 half-square triangles
Cut (4) squares 2⁵/₈"

Fabric AA

Cut (40) squares 4¹/₄", cut in half diagonally twice to make 160 quarter-square triangles

2 Orchid From each:

Cut (18) squares 4¹/₄", cut in half diagonally twice to make 72 quarter-square triangles from each

6 Fat ¼ From each:

Cut (8) squares 4¹/₄", cut in half diagonally twice to make 32 quarter-square triangles from each

Binding

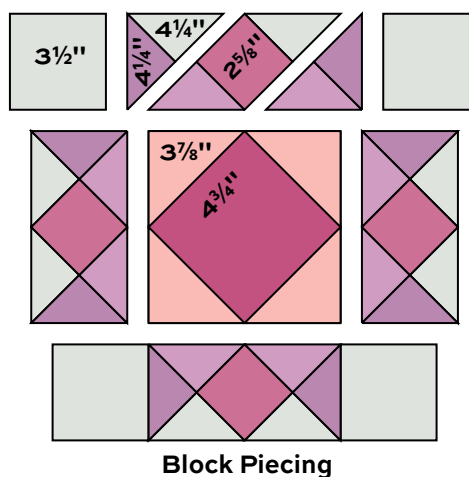
Cut (9) strips 2¹/₂" x WOF for binding

Backing

Cut (3) lengths 32" x 95", pieced to fit quilt top with overlap on all sides

Making the Quilt

1. Note that Blocks 4, 5, and 6 in the center of the quilt are darker than those around the outer edges. If you switch out fabrics, be sure to make Blocks 1 and Blocks 2 with the lightest prints. Refer to Cutting for ONE BLOCK and the individual block diagrams. Select the appropriate triangles and squares for Block 1. Arrange the patches in 3 horizontal rows as shown in the Block Piecing diagram.
2. Fold the 3⁷/₈" triangles in half to find the middle of the long side. Mark with a pin. Likewise, fold the 4³/₄" center square to find the middle of each side and mark with pins. Matching centers, sew a 3⁷/₈" triangle to each side of the center square. Press seam allowances away from the center square. The unit should measure 6¹/₂" square from edge to edge. If it does not, adjust your stitching and/or pressing. Set aside.
3. Join the quarter-square triangles and the 2⁵/₈" squares to make 4 side units. The units should measure 3¹/₂" x 6¹/₂". Sew side units to opposite sides of the center unit. Sew 3¹/₂" squares to the ends of the remaining side units. Sew to the top and bottom of the center. The block should measure 12¹/₂" square.
4. Refer to the block diagrams to select fabric for each block. Follow steps above to make the number of blocks listed, 41 blocks total.



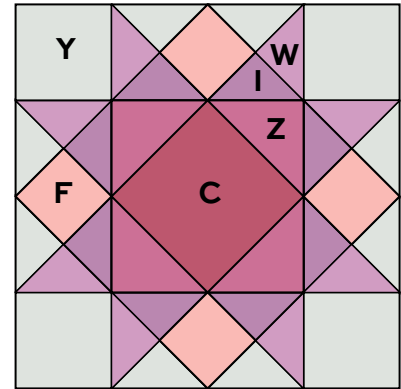
Dusk Settles Quilt

5. Refer to the Quilt Assembly. Arrange the blocks in diagonal rows. Add Fabric O quarter-square triangles to ends of rows. Stand back or look through a camera to be certain that the blocks are in the correct order. Once you are satisfied, join the blocks into rows, and then join the rows. Sew a Fabric O 10" half-square triangle to each corner.

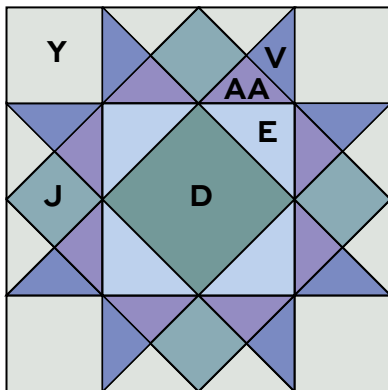
Finishing the Quilt

6. Layer the quilt with batting and backing and baste. Quilt in the ditch around patches. Quilt the Fabric O triangles as you wish. Bind to finish the quilt.

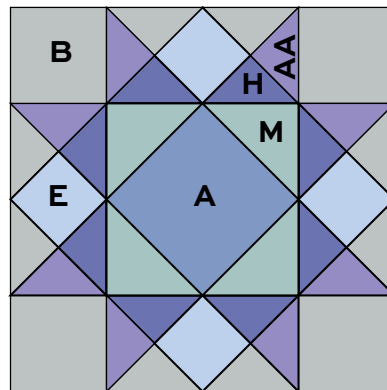
Note: The alphabet letters refer to the labels on the Block diagrams on page 4 and the fabric thumbnail sheet on page 6.



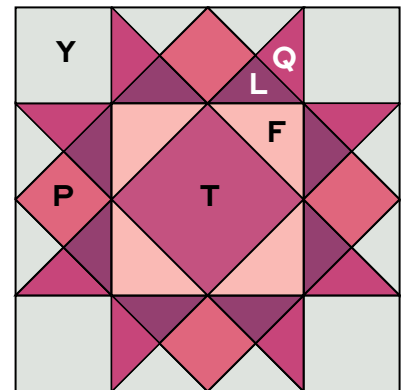
Block 1 – Make 8



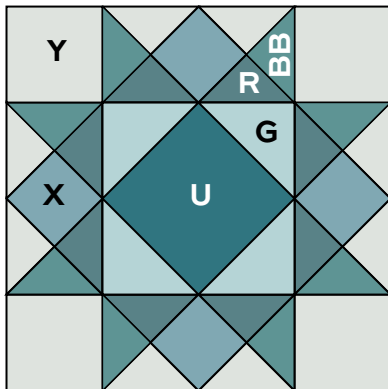
Block 2 – Make 8



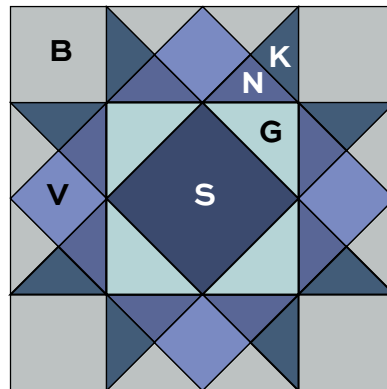
Block 3 – Make 12



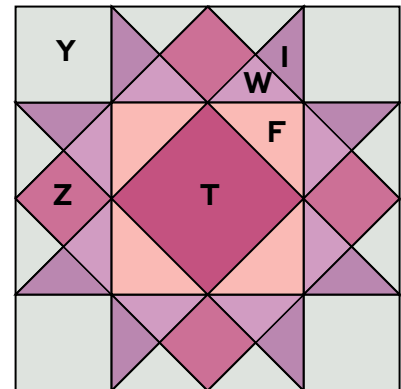
Block 4 – Make 4



Block 5 – Make 4

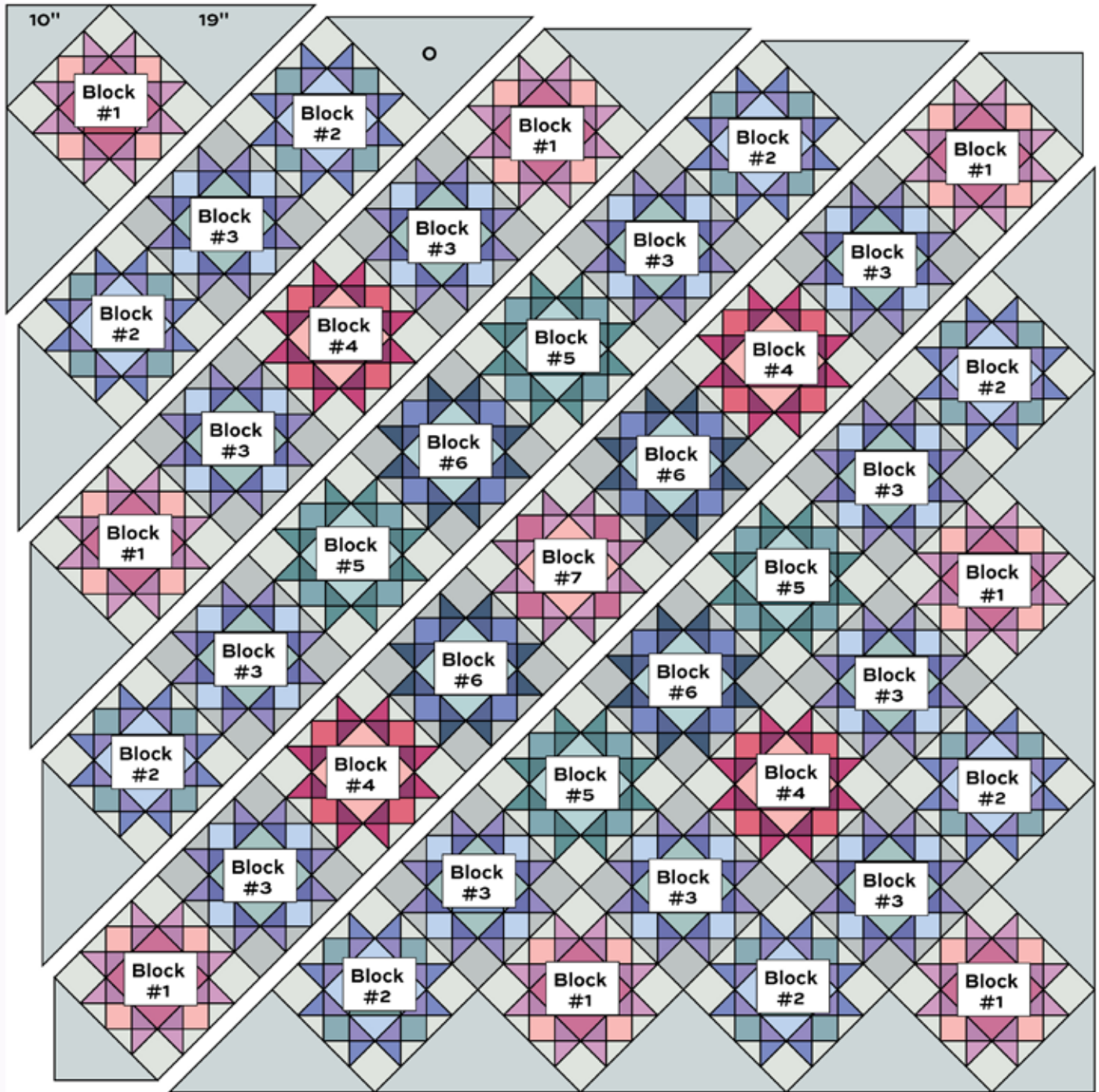


Block 6 – Make 4



Block 7 – Make 1

Dusk Settles Quilt



Quilt Assembly

At Day's End

SARAH J. MAXWELL



1092-B



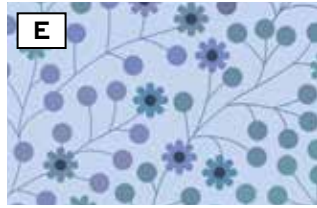
1092-C



1092-E



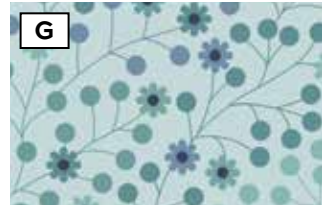
1092-T



1093-B



1093-E



1093-T



1094-B



1094-P



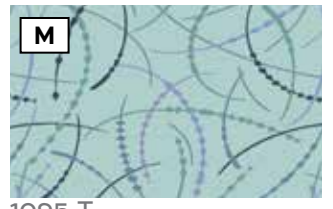
1094-T



1095-B



1095-P



1095-T



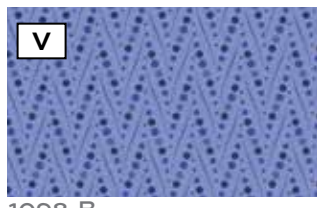
1097-B



1097-E



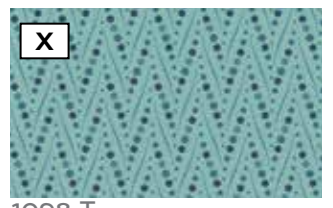
1097-T



1098-B



1098-P



1098-T



1096-B



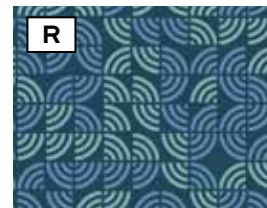
1096-C



1096-E



1096-P



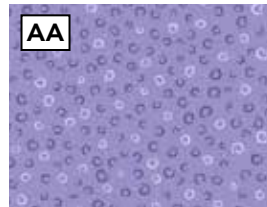
1096-T



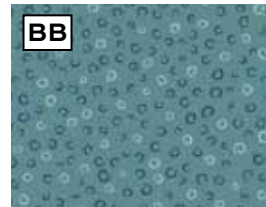
1099-C



1099-E



1099-P



1099-T

All fabrics are used in quilt pattern.
Fabrics shown are 50% of actual size.